

SINGLE ACTING CYLINDERS, LOAD RETURN

- ✓ Capacities from 50 to 1000 ton, stroke up to 300mm
- ✓ Nickel plated piston to extend cylinder life.
- ✓ Optional tilt saddles available
- ✓ Load return, for weighing, lifting and positioning applications in civil engineering
- ✓ For confined spaces and loads up to 150 ton, use the SSP and SSX cylinder lines
- ✓ End of stroke stopping to prevent piston blow out

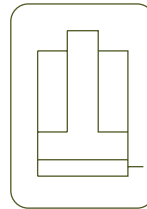
SSX
Single Acting Low Profile Cylinders

P.24

SSP
Low Height Single Acting Cylinders

P.22





S/A LOAD RETURN CYLINDERS



| | |
|---------------|----------------|
| Type | CPC |
| Capacity | 50 - 1.000 ton |
| Stroke | 50 - 300 mm |
| Max. pressure | 700 bar |

CPC CYLINDERS



CDC
Double Acting High Tonnage Cylinders



P.44

HBM / HBE
Powerpacks



P.72



HBM / HBE
Powerpacks



P.72

Z22107
Air Hydraulic Pumps

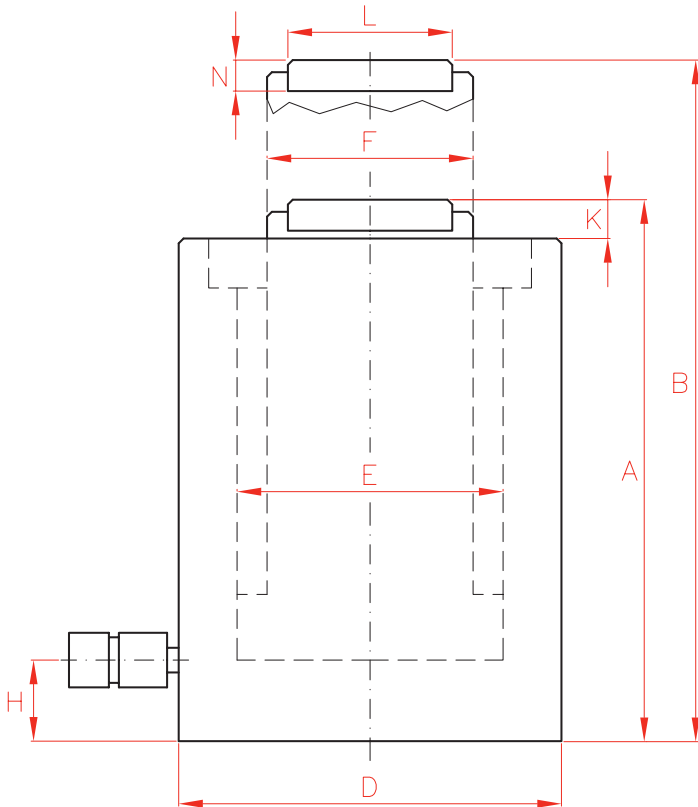


P.70

W
Single Acting Hand Pumps

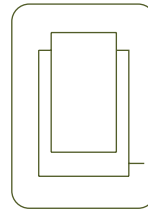


P.66



| Capacity | | Stroke mm | Model LARZEP | Oil Cap. cm ³ | A mm |
|----------|--------|--------------|-----------------|-----------------------------|---------|
| ton | kN | | | | |
| 50 | 539 | 50 | CPC05005 | 385 | 162 |
| | | 150 | CPC05015 | 1155 | 262 |
| | | 300 | CPC05030 | 2309 | 412 |
| 100 | 929 | 50 | CPC10005 | 664 | 179 |
| | | 150 | CPC10015 | 1991 | 279 |
| | | 300 | CPC10030 | 3982 | 429 |
| 150 | 1.390 | 50 | CPC15005 | 993 | 196 |
| | | 150 | CPC15015 | 2978 | 296 |
| | | 300 | CPC15030 | 5957 | 446 |
| 200 | 1.861 | 50 | CPC20005 | 1330 | 212 |
| | | 150 | CPC20015 | 3989 | 312 |
| | | 300 | CPC20030 | 7977 | 462 |
| 250 | 2.565 | 50 | CPC25005 | 1832 | 235 |
| | | 150 | CPC25015 | 5497 | 335 |
| | | 300 | CPC25030 | 10993 | 485 |
| 300 | 3.193 | 50 | CPC30005 | 2281 | 322 |
| | | 150 | CPC30015 | 6843 | 422 |
| | | 300 | CPC30030 | 13685 | 572 |
| 500 | 5.114 | 50 | CPC50005 | 3653 | 360 |
| | | 150 | CPC50015 | 10959 | 460 |
| | | 300 | CPC50030 | 21918 | 610 |
| 600 | 5.987 | 50 | CPC60005 | 4276 | 360 |
| | | 150 | CPC60015 | 12829 | 460 |
| | | 300 | CPC60030 | 25659 | 610 |
| 800 | 8.234 | 50 | CPC80005 | 5881 | 395 |
| | | 150 | CPC80015 | 17644 | 495 |
| | | 300 | CPC80030 | 35288 | 645 |
| 1.000 | 10.260 | 50 | CPC100005 | 7329 | 421 |
| | | 150 | CPC100015 | 21986 | 521 |
| | | 300 | CPC100030 | 43972 | 671 |





S/A LOAD RETURN CYLINDERS



| | |
|---------------|-----------------------|
| Type | CPC |
| Capacity | 50 - 1.000 ton |
| Stroke | 50 - 300 mm |
| Max. pressure | 700 bar |

CPC CYLINDERS

| | B | D | E | F | H | K | L | N | Area | Weight | Model | With tilting saddle | |
|--|-----|-----|-----|-----|-----|----|-----|----|-----------------|--------|------------------|---------------------|-----------|
| | mm | mm | mm | mm | mm | mm | mm | mm | cm ² | kg | LARZEP | A | Model |
| | 212 | 130 | 99 | 70 | 52 | 1 | 50 | 20 | 77,0 | 17 | CPC05005 | 176 | CATS50 |
| | 412 | 130 | 99 | 70 | 52 | 1 | 50 | 20 | 77,0 | 23 | CPC05015 | 276 | CATS50 |
| | 712 | 130 | 99 | 70 | 52 | 1 | 50 | 20 | 77,0 | 34 | CPC05030 | 426 | CATS50 |
| | 229 | 165 | 130 | 95 | 54 | 1 | 75 | 20 | 132,7 | 29 | CPC10005 | 189 | CATS101 |
| | 429 | 165 | 130 | 95 | 54 | 1 | 75 | 20 | 132,7 | 40 | CPC10015 | 289 | CATS101 |
| | 729 | 165 | 130 | 95 | 54 | 1 | 75 | 20 | 132,7 | 58 | CPC10030 | 439 | CATS101 |
| | 246 | 205 | 159 | 114 | 61 | 1 | 94 | 20 | 198,6 | 39 | CPC15005 | 215 | CATS150 |
| | 446 | 205 | 159 | 114 | 61 | 1 | 94 | 20 | 198,6 | 65 | CPC15015 | 315 | CATS150 |
| | 746 | 205 | 159 | 114 | 61 | 1 | 94 | 20 | 198,6 | 105 | CPC15030 | 465 | CATS150 |
| | 262 | 235 | 184 | 133 | 67 | 1 | 113 | 25 | 265,9 | 55 | CPC20005 | 230 | CATS200 |
| | 462 | 235 | 184 | 133 | 67 | 1 | 113 | 25 | 265,9 | 91 | CPC20015 | 330 | CATS200 |
| | 762 | 235 | 184 | 133 | 67 | 1 | 113 | 25 | 265,9 | 146 | CPC20030 | 480 | CATS200 |
| | 285 | 275 | 216 | 165 | 73 | 1 | 145 | 25 | 366,4 | 89 | CPC25005 | 274 | CATS250 |
| | 485 | 275 | 216 | 165 | 73 | 1 | 145 | 25 | 366,4 | 136 | CPC25015 | 374 | CATS250 |
| | 785 | 275 | 216 | 165 | 73 | 1 | 145 | 25 | 366,4 | 207 | CPC25030 | 524 | CATS250 |
| | 372 | 310 | 241 | 197 | 101 | 1 | 177 | 20 | 456,2 | 184 | CPC30005 | 361 | CATS301R |
| | 572 | 310 | 241 | 197 | 101 | 1 | 177 | 20 | 456,2 | 232 | CPC30015 | 461 | CATS301R |
| | 872 | 310 | 241 | 197 | 101 | 1 | 177 | 20 | 456,2 | 303 | CPC30030 | 611 | CATS301R |
| | 410 | 400 | 305 | 248 | 114 | 3 | 228 | 30 | 730,6 | 379 | CPC50005 | 408 | CATS501R |
| | 610 | 400 | 305 | 248 | 114 | 3 | 228 | 30 | 730,6 | 468 | CPC50015 | 508 | CATS501R |
| | 910 | 400 | 305 | 248 | 114 | 3 | 228 | 30 | 730,6 | 601 | CPC50030 | 658 | CATS501R |
| | 410 | 430 | 330 | 267 | 114 | 3 | 247 | 30 | 855,3 | 438 | CPC60005 | 413 | CATS601R |
| | 610 | 430 | 330 | 267 | 114 | 3 | 247 | 30 | 855,3 | 540 | CPC60015 | 513 | CATS601R |
| | 910 | 430 | 330 | 267 | 114 | 3 | 247 | 30 | 855,3 | 693 | CPC60030 | 663 | CATS601R |
| | 445 | 505 | 387 | 317 | 149 | 3 | 297 | 30 | 1176,3 | 665 | CPC80005 | 452 | CATS801R |
| | 645 | 505 | 387 | 317 | 149 | 3 | 297 | 30 | 1176,3 | 809 | CPC80015 | 552 | CATS801R |
| | 945 | 505 | 387 | 317 | 149 | 3 | 297 | 30 | 1176,3 | 1023 | CPC80030 | 702 | CATS801R |
| | 471 | 560 | 432 | 343 | 174 | 3 | 323 | 30 | 1465,7 | 872 | CPC100005 | 498 | CATS1001R |
| | 671 | 560 | 432 | 343 | 174 | 3 | 323 | 30 | 1465,7 | 1047 | CPC100015 | 598 | CATS1001R |
| | 971 | 560 | 432 | 343 | 174 | 3 | 323 | 30 | 1465,7 | 1305 | CPC100030 | 748 | CATS1001R |