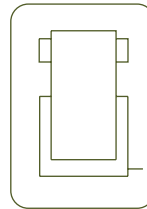


SINGLE ACTING LOCKNUT CYLINDERS, LOAD RETURN

- ✓ Capacities from 50 to 1000 ton, stroke up to 300mm
- ✓ The locknut holds the load mechanically for extended periods of time
- ✓ Nickel plated piston to extend cylinder life
- ✓ Optional tilt saddles available
- ✓ Hydraulic end of stroke overflow port
- ✓ Used for foundation supporting, bridge construction and shipbuilding
- ✓ For confined spaces, use **CTX** models



S/A LOCKNUT CYLINDERS



Type	CTC
Capacity	50 - 1.000 ton
Stroke	50 - 300 mm
Max. pressure	700 bar

CATS
Optional Tilting Saddles available

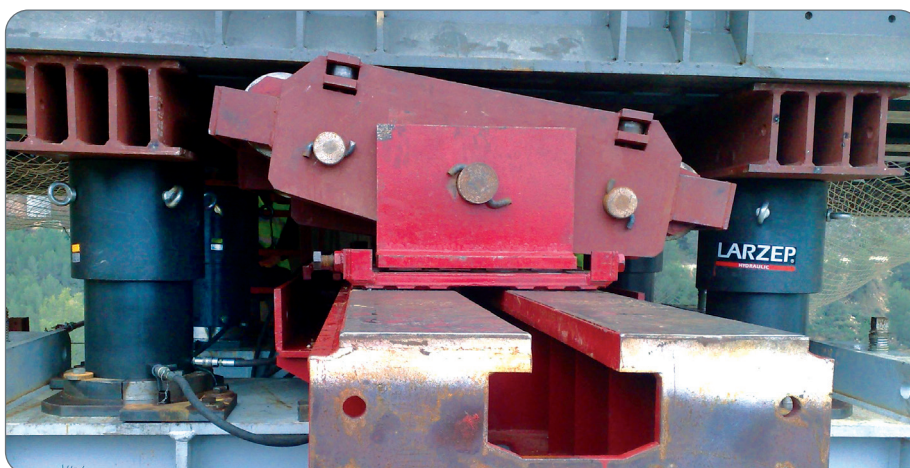


P.89

CTX
Single Acting Pancake Locknut Cylinders



P.32



AZ3

Coupler 3/8"-18 NPT included



P.84

AP2

Hoses



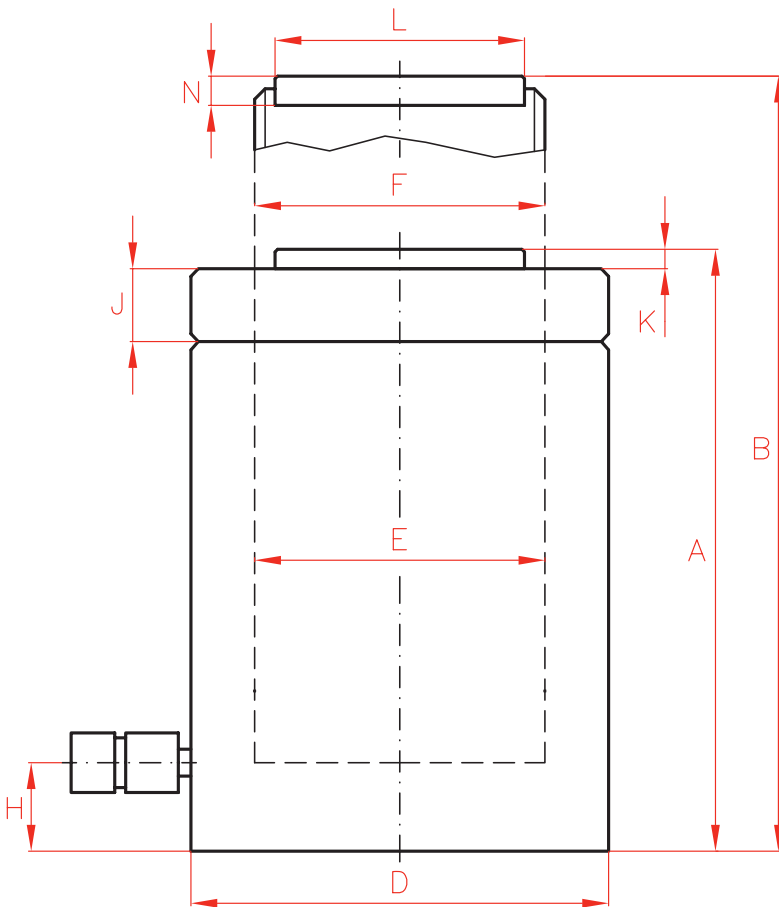
P.83

AV

Pressure Gauges



P.92



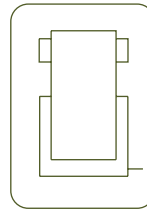
Capacity		Stroke	Model	Oil Cap.	A	
ton	kN	mm	LARZEP	cm ³	mm	
50	496	50	CTC05005	355	164	
		100	CTC05010	709	214	
		150	CTC05015	1064	264	
		300	CTC05030	2127	414	
100	929	50	CTC10005	664	187	
		100	CTC10010	1327	237	
		150	CTC10015	1991	287	
		300	CTC10030	3981	437	
150	1.390	50	CTC15005	993	209	
		100	CTC15010	1986	259	
		150	CTC15015	2979	309	
		300	CTC15030	5958	459	
200	1.859	50	CTC20005	1330	243	
		150	CTC20015	3989	343	
		300	CTC20030	7995	493	
250	2.562	50	CTC25005	1832	249	
		150	CTC25015	5496	349	
		300	CTC25030	10995	499	
300	3.193	50	CTC30005	2281	295	
		150	CTC30015	6843	395	
		300	CTC30030	13740	545	
500	5.118	50	CTC50005	3653	375	
		150	CTC50015	10959	475	
		300	CTC50030	21930	625	
600	5.983	50	CTC60005	4277	395	
		150	CTC60015	12830	495	
		300	CTC60030	25650	645	
800	8.238	50	CTC80005	5882	455	
		150	CTC80015	17645	555	
		300	CTC80030	35370	705	
1.000	10.260	50	CTC100005	7329	495	
		150	CTC100015	21986	595	
		300	CTC100030	43980	745	



W
Single Acting Hand Pumps



P.66



S/A LOCKNUT CYLINDERS



Type **CTC**

Capacity **30 - 1.000 ton**

Stroke **50 - 300 mm**

CTC CYLINDERS

	B	D	E	F	H	J	K	L	N	Area	Weight	Model	With tilting saddle	
	mm	mm	mm	mm	mm	mm	mm	mm	mm	cm ²	kg	LARZEP	A	Model
	214	125	95,0	Tr 95 x 4	30	36	2	71	15	70,9	15	CTC05005	179	CATS100
	314	125	95,0	Tr 95 x 4	30	36	2	71	15	70,9	20	CTC05010	229	CATS100
	414	125	95,0	Tr 95 x 4	30	36	2	71	15	70,9	25	CTC05015	279	CATS100
	714	125	95,0	Tr 95 x 4	30	36	2	71	15	70,9	40	CTC05030	429	CATS100
	237	165	130,0	Tr 130 x 6	30	44	2	71	15	132,7	30	CTC10005	202	CATS100
	337	165	130,0	Tr 130 x 6	30	44	2	71	15	132,7	39	CTC10010	252	CATS100
	437	165	130,0	Tr 130 x 6	30	44	2	71	15	132,7	48	CTC10015	302	CATS100
	737	165	130,0	Tr 130 x 6	30	44	2	71	15	132,7	73	CTC10030	452	CATS100
	259	205	159,0	Tr 159 x 6	39	44	2	130	27	198,6	53	CTC15005	225	CATS201
	359	205	159,0	Tr 159 x 6	39	44	2	130	27	198,6	66	CTC15010	275	CATS201
	459	205	159,0	Tr 159 x 6	39	44	2	130	27	198,6	78	CTC15015	325	CATS201
	759	205	159,0	Tr 159 x 6	39	44	2	130	27	198,6	117	CTC15030	475	CATS201
	293	235	184,0	Tr 184 x 6	50	50	2	130	27	265,6	83	CTC20005	259	CATS201
	493	235	184,0	Tr 184 x 6	50	50	2	130	27	265,6	117	CTC20015	359	CATS201
	793	235	184,0	Tr 184 x 6	50	50	2	130	27	265,6	170	CTC20030	509	CATS201
	299	275	216,0	Tr 216 x 6	50	56	2	150	27	366,1	116	CTC25005	288	CATS251
	499	275	216,0	Tr 216 x 6	50	56	2	150	27	366,1	162	CTC25015	388	CATS251
	799	275	216,0	Tr 216 x 6	50	56	2	150	27	366,1	234	CTC25030	538	CATS251
	345	310	241,0	Tr 241 x 6	59	60	5	139	30	456,2	173	CTC30005	334	-
	545	310	241,0	Tr 241 x 6	59	60	5	139	30	456,2	233	CTC30015	434	-
	845	310	241,0	Tr 241 x 6	59	60	5	139	30	456,2	323	CTC30030	584	-
	425	400	305,0	Tr 305 x 6	80	80	5	179	30	731,1	367	CTC50005	423	CATS500
	625	400	305,0	Tr 305 x 6	80	80	5	179	30	731,1	466	CTC50015	523	CATS500
	925	400	305,0	Tr 305 x 6	80	80	5	179	30	731,1	617	CTC50030	673	CATS500
	445	430	330,0	Tr 330 x 6	85	85	5	194	30	854,8	446	CTC60005	448	CATS600
	645	430	330,0	Tr 330 x 6	85	85	5	194	30	854,8	562	CTC60015	548	CATS600
	945	430	330,0	Tr 330 x 6	85	85	5	194	30	854,8	737	CTC60030	698	CATS600
	505	505	387,0	Tr 387 x 6	100	100	5	224	30	1176,9	709	CTC80005	512	CATS800
	705	505	387,0	Tr 387 x 6	100	100	5	224	30	1176,9	870	CTC80015	612	CATS800
	1005	505	387,0	Tr 387 x 6	100	100	5	224	30	1176,9	1110	CTC80030	762	CATS800
	545	560	432,0	Tr 432 x 6	110	110	5	249	30	1466,4	949	CTC100005	572	CATS1000
	745	560	432,0	Tr 432 x 6	110	110	5	249	30	1466,4	1141	CTC100015	672	CATS1000
	1045	560	432,0	Tr 432 x 6	110	110	5	249	30	1466,4	1430	CTC100030	822	CATS1000