

**SINGLE ACTING PANCAKE LOCKNUT CYLINDERS, LOAD RETURN**

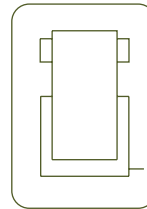
- ✓ Capacities from 50 to 500 ton, stroke up to 50mm
- ✓ The locknut holds the load mechanically for extended periods of time
- ✓ Nickel plated piston with wiper seal to extend cylinder life.
- ✓ Built-in tilting saddle as standard to improve side-load resistance
- ✓ Hydraulic end of stroke overflow port.
- ✓ Used for foundation supporting, bridge construction and shipbuilding
- ✓ For longer strokes, use **CTC** models



**CTC**  
Single Acting Locknut Cylinders



P.26



**S/A LOCKNUT CYLINDERS**



Type	<b>CTX</b>
Capacity	<b>60 - 500 ton</b>
Stroke	<b>45 - 50 mm</b>
Max. pressure	<b>700 bar</b>

CTX CYLINDERS

**CTX**  
Built-in Tilting Saddle

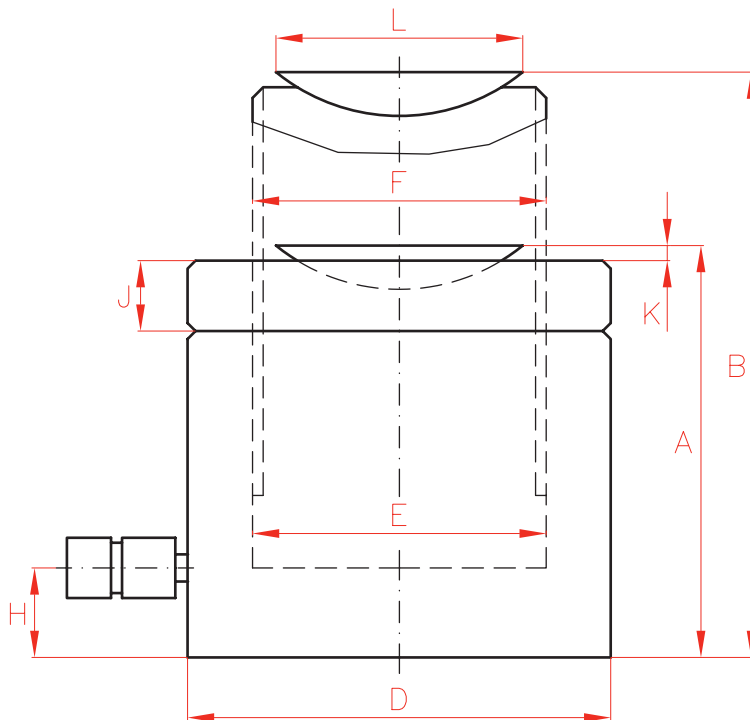


P.32

**SSX**  
Single Acting Low Profile Cylinders,  
Spring Return



P.24



Capacity		Stroke	Model	Oil Cap.	A	B	D	E	F	H	J	K	L	Area	Weight
ton	kN	mm	LARZEP	cm <sup>3</sup>	mm	mm	mm	mm	mm	mm	mm	mm	mm	cm <sup>2</sup>	kg
60	606	50	CTX06005	432	125	175	140	105,0	Tr 104 x 4	19	28	6	96	86,6	15
100	1.027	50	CTX10005	734	137	187	175	136,7	Tr 136 x 6	21	31	8	126	146,8	26
160	1.619	45	CTX16004	1040	148	193	220	171,6	Tr 171 x 6	27	40	9	160	231,3	44
200	1.999	45	CTX20004	1285	155	200	245	190,7	Tr 190 x 6	30	43	10	180	285,6	57
260	2.567	45	CTX25004	1650	159	204	275	216,1	Tr 216 x 6	32	44	11	200	366,8	74
400	3.916	45	CTX40004	2517	178	223	350	266,9	Tr 266 x 6	39	55	11	250	559,5	134
500	5.114	45	CTX50004	3287	192	237	400	305,0	Tr 305 x 6	48	62	10	290	730,6	189