

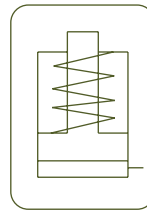
SINGLE ACTING LOW HEIGHT CYLINDERS, SPRING RETURN



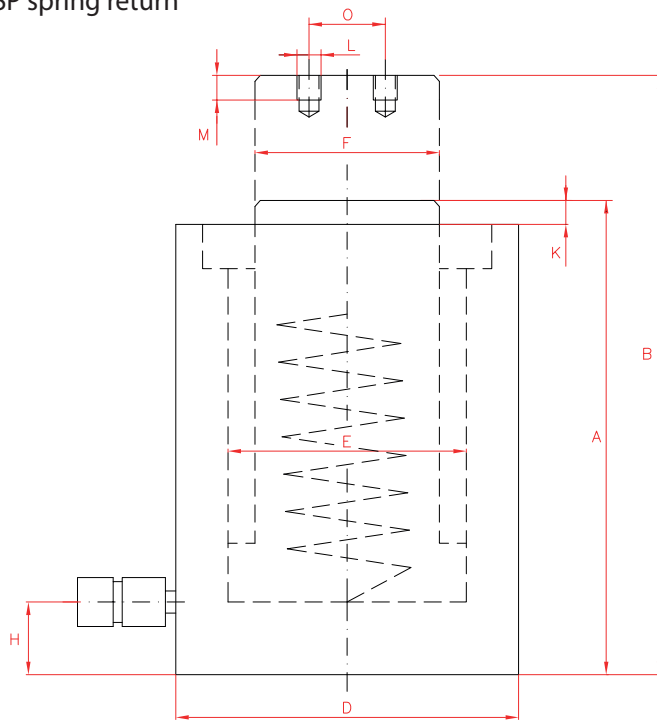
- ✓ Low height hydraulic cylinders with a capacity from 10 to 95 ton, stroke up to 62 mm, rated for 700 bar.
- ✓ Low profile for use in confined spaces: machinery positioning, tool fastening, load tests.
- ✓ Nickel plated piston with wiper seal to extend cylinder life.
- ✓ Optional tilt saddles available.
- ✓ Strong spring for improved retraction time.

Capacity		Stroke	Model	Oil Cap.	A	B	D	E	F	H	K
ton	kN	mm	LARZEP	cm ³	mm	mm	mm	mm	mm	mm	mm
10	101	38	SSP01004	55	88	126	69	42,9	38,1	17	5
20	201	45	SSP02004	129	98	143	92	60,5	50,8	17	3
30	295	62	SSP03006	261	117	179	101	73,2	66,5	19	3
45	435	60	SSP05006	373	122	182	124	88,9	69,8	23	2
90	887	57	SSP10006	722	141	198	165	127,0	92,2	31	1





SSP spring return



	L	M	O	Area	Weight	Model	With tilting saddle	
	mm	mm	mm	cm ²	kg	LARZEP	A	Model
	M4	8	26	14,5	2,7	SSP01004	108	CATS13
	M5	8	40	28,7	5,0	SSP02004	124	CATS53
	M5	8	40	42,1	6,8	SSP03006	143	CATS53
	M5	8	40	62,1	10,0	SSP05006	148	CATS53
	M8	10	55	126,7	20,7	SSP10006	176	CATS103

SINGLE ACTING CYLINDERS



Type	SSP
Capacity	10 - 95 ton
Stroke	38 - 62 mm
Max. pressure	700 bar

SSP CYLINDERS

J
Cylinder and pump sets



P.60

SSX
Single Acting Low Profile Cylinders



P.24

AZ3
Coupler inclined 10°



P.86

CATS
Optional Tilting Saddles



P.89