

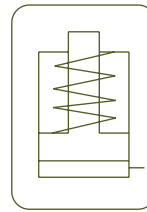
SINGLE ACTING LOW PROFILE CYLINDERS, SPRING RETURN

- ✓ Low height hydraulic cylinders with a capacity from 4 to 145 ton, stroke up to 16 mm, rated for 700 bar.
- ✓ For use in confined spaces: machinery positioning, tool fastening.
- ✓ With two parallel faces for horizontal operation.
- ✓ Mounting bolt holes for easy fixing.
- ✓ Nickel plated piston with wiper seal to extend cylinder life.
- ✓ Strong spring to improve retraction time.

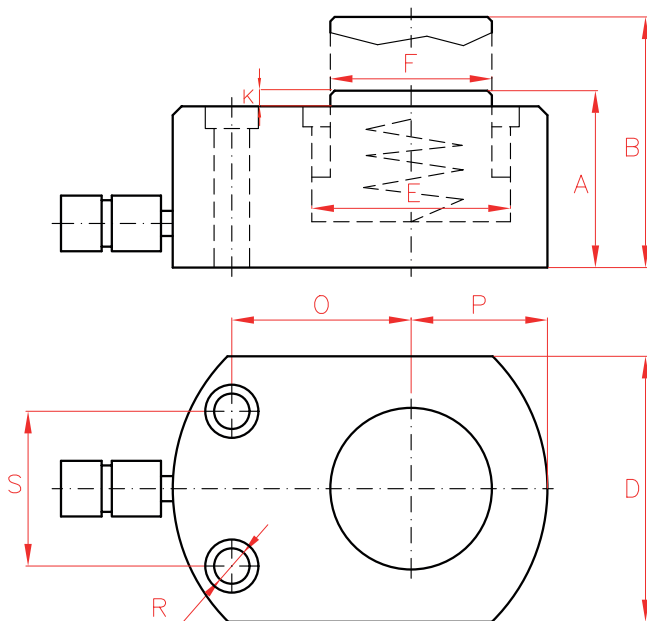
W
Single Acting Hand Pumps

P.66





SSX spring return



SINGLE ACTING CYLINDERS



Type	SSX
Capacity	5 - 150 ton
Stroke	6 - 16 mm
Max. pressure	700 bar

SSX CYLINDERS

SSP
Low Height Single Acting Cylinders



P.22

CTX
Single Acting Pancake Locknut Cylinders



P.32

Capacity		Stroke	Model	Oil Cap.	A	B	D	E	F	H	K	O	P	R	S	Area	Weight
ton	kN	mm	LARZEP	cm ³	mm	mm	mm	mm	mm	mm	mm	mm	mm	mm	mm	cm ²	kg
5	45	6	SSX00406	4	32	38	58 x 41	28,7	25,4	16	1	22	20	5,5	28,5	6,5	1,0
		16	SSX00416	10	41	57	58 x 41	28,7	25,4	19	1	22	20	5,5	28,5	6,5	1,0
10	101	11	SSX01011	18	43	54	82 x 55	42,9	38,1	19	1	34	27	7,1	36,6	14,5	1,4
20	201	11	SSX02211	32	51	62	101 x 76	60,5	50,8	19	1	39	39	10,0	49,3	28,7	3,1
30	295	13	SSX03013	55	58	71	117 x 95	73,2	63,4	19	2	44	47	10,0	52,3	42,1	4,5
45	435	16	SSX05016	99	66	82	140 x 114	88,9	69,8	19	2	53	57	11,0	66,5	62,1	6,8
75	718	16	SSX07516	164	79	95	165 x 139	114,3	82,6	19	2	66	69	13,5	76,2	102,6	11,3
90	887	16	SSX10016	203	85	101	178 x 153	127,0	92,2	19	2	74	76	13,5	76,2	126,7	14,5
150	1.386	16	SSX15016	317	100	116	215 x 190	158,8	114,3	23	2	82	95	13,5	117,3	198,1	26,3